

# Genie® Z®-62/40 & Z-62/40 TraX™

## Specifications

Models	Z-62/40 & Z-62/40 TraX	
Measurements	US	Metric
Working height max. <sup>(1)</sup>	67 ft 11 in	20.87 m
Platform height max.	61 ft 11 in	18.87 m
Horizontal reach max.	40 ft 9 in	12.42 m
Below ground reach		
Up and over clearance max.	25 ft 7 in	7.8 m
<b>A</b> Platform length	3 ft/2 ft 6 in	0.91 m/0.76 m
<b>B</b> Platform width	8 ft/6 ft	2.44 m/1.83 m
<b>C</b> Height - stowed (tires)	8 ft 4 in	2.54 m
<b>C</b> Height - stowed (TraX)	8 ft 6 in	2.59 m
<b>C</b> Height storage/transport height (jib tucked under - Tires/TraX)	9 ft 6 in/9 ft 8 in	2.90 m/2.95 m
<b>D</b> Length - stowed (tires)	30 ft 3 in	9.25 m
<b>D</b> Length - stowed (TraX)		
<b>E</b> Width	8 ft 2 in	2.49 m
<b>G</b> Width (TraX)		
<b>F</b> Wheelbase	8 ft 2 in	2.49 m
<b>G</b> Ground clearance - center (tires)	1 ft 3 in	0.41 m
<b>G</b> Ground clearance - center (TraX)	1 ft 5 in	0.43 m

## Productivity

Lift capacity max. - unrestricted	500 lb	227 kg
Platform rotation		180°
Jib length	5 ft	1.52 m
Vertical jib rotation		135°
Turntable rotation		360°
Turntable tailswing		zero
Drive speed - stowed (tires) <sup>(2)</sup>	3.0 mph	4.8 km/h
Drive speed - stowed (TraX)		
Drive speed - raised (tires)	0.68 mph	1.1 km/h
Drive speed - raised (TraX)		
Gradeability - stowed <sup>(2)</sup>		30%
Tilt sensor activation (front to back/side to side)		4.5° / 4.5°
Turning radius - inside/outside (tires, 4WD)	9 ft 2 in/18 ft 9 in	2.80 m/5.71 m
Tires (solid, non-marking)		355/55 D625

## Power

Power		Diesel
Auxiliary power unit		12V DC
Hydraulic tank capacity	35 gal	132 L
Fuel tank capacity	35 gal	132 L

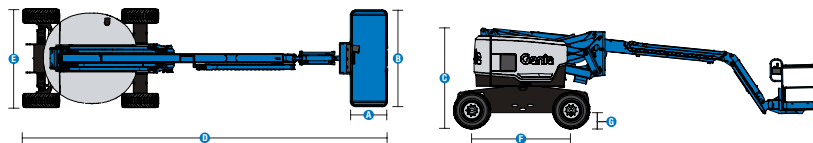
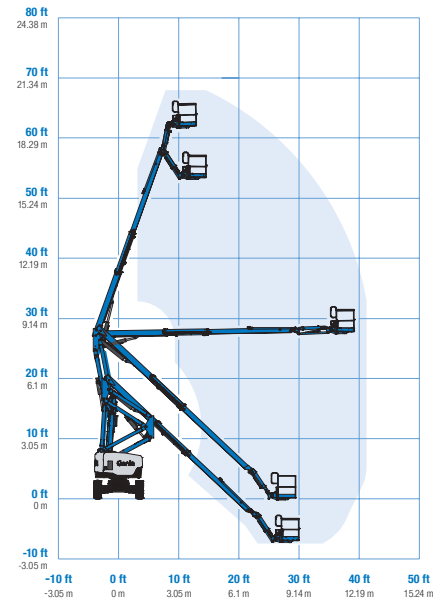
## Weight<sup>(3)</sup> and Floor Loading<sup>(4)</sup>

Weight, 2WS	22,185 lb	10,063 kg
Weight (TraX)	22,690 lb	10,292 kg
Tire contact pressure	11 psi	75.8 kPa
Occupied floor pressure (tires)	247 psf	11.83 kPa

## Sound and Vibration Levels

Sound Pressure level (ground workstation)		84 dBA
Sound Pressure level (platform workstation)		75 dBA
Vibrations	8 ft 2 in/s <sup>2</sup>	2.5 m/s <sup>2</sup>

## Range of motion Z-62/40/Z-62/40 TraX



- (1) The metric equivalent of working height adds 2 m to platform height. The imperial equivalent adds 6 ft to platform height.
- (2) Gradeability applies to driving on slopes and may vary depending on options and machine configurations. See operator's manual for details regarding slope ratings.
- (3) Weight refers to standard configuration and may vary depending on options and/or country standards.
- (4) Floor loading information is approximate and may vary depending on options and machine configurations. It should be used only with adequate safety factors.

## Distributed By:

**equipinc**

## Equipinc AWP Sdn Bhd (1077085-A)

31, Jalan Serendah 26/39, i-Parc 2 Seksyen 26,  
40400 Shah Alam, Selangor.  
T + (603) 5103 0939/ 5103 2685  
F + (603) 5103 2839  
H/P + (6012) 377 3571 (Zun), + (6012) 639 2731 (Tan)  
E awpsales@equip-inc.com

# Genie® Z®-62/40 & Z-62/40 TraX™

## SKU: Standard Model

- **Z6200001C30029:** Z-62/40, 2WD
- **Z6200001AI0033:** Z-62/40, 4WD
- **Z6200001AI0034:** Z-62/40 TraX 74 hp, Deutz Turbo Diesel

\* Build to Order

Option availability		S	S+	BtO	
Power	48 hp, 35.8 kW, Deutz D2011, Diesel, T4i/Stage IIIA	✓	✓	✓	
	60 hp, 45 kW, Deutz TD2.2L, Turbo Diesel, Stage V (TraX)	✓	✓	✓	
	60 hp, 44.7 kW, Ford MSG425 gas/LPG Dual Fuel			○	
	74 hp, 55 kW, Deutz TD2011, Turbo Diesel, T4i/Stage IIIA			○	
	Cold weather package			○	
	Diesel air intake pre-cleaner			○	
	Diesel catalytic scrubber muffler (T4i/Stage IIIA)			○	
	Engine gauge package			○	
	LPG tank 33.5 lb			○	
	LPS fire protection rating			○	
	Positive air shutdown system			○	
	Auto engine fault shutdown	✓	✓	✓	
	Platform	6ft/1.83m dual-entry platform with side swing gate			○
		8ft/2.44m tri-entry platform with side swing gate	✓	✓	✓
8ft/2.44m tri-entry platform with side swing gate		✓	✓	✓	
Dual axis joystick steering		✓	✓	✓	
Thumb rocker steering				○	
Air line to platform				○	
Aircraft protection kit				○	
Control box covers				○	
Lift Guard Full Mesh panels				○	
Lift Guard Half Mesh panels				○	
Light Package: drive and work lights				○	
Platform auxiliary top rail				○	
3kW AC Generator, 110V/60Hz				○	
3kW AC Generator, 220V/50Hz				○	
12kW Welder ready				○	
5ft/1.52m Jib		✓	✓	✓	
AC Power cord to platform		✓	✓	✓	
Drive enable system		✓	✓	✓	
Horn		✓	✓	✓	
Lift Guard Contact Alarm		✓	✓	✓	
Lift Tools Work Tray	✓	✓	✓		
Platform load sense system	✓	✓	✓		
Proportional controls	✓	✓	✓		
Self-leveling platform	✓	✓	✓		
Travel alarm package: flashing beacons, descent, travel and tilt alarms	✓	✓	✓		
Chassis	Lift Connect Telematics			○	
	Lift Connect with Access Manager upgrade			○	
	Biodegradable hydraulic oil			○	
	Cold weather hydraulic oil			○	
	Fire resistant hydraulic oil			○	
	Rough terrain, foam-filled tires	✓	✓	✓	
	Rough terrain, foam-filled, non-marking tires			○	
	TraX quadra track drive system			○	
	2 wheel steering	✓	✓	✓	
	4 wheel steering			○	
	Deluxe hostile environment kit			○	
	Hostile environment kit			○	
	Tow package			○	
	2 speed wheel motors	✓	✓	✓	
	Active oscillating axle	✓	✓	✓	
	Chassis tilt drive function cut-out	✓	✓	✓	
Dual parallelogram lift linkage	✓	✓	✓		
Hour meter	✓	✓	✓		
Hydraulic oil cooler	✓	✓	✓		

Positive air shutdown Deutz engines only

- S Standard
- S+ Standard +
- BtO Build to Order
- ✓ Standard Features
- Options



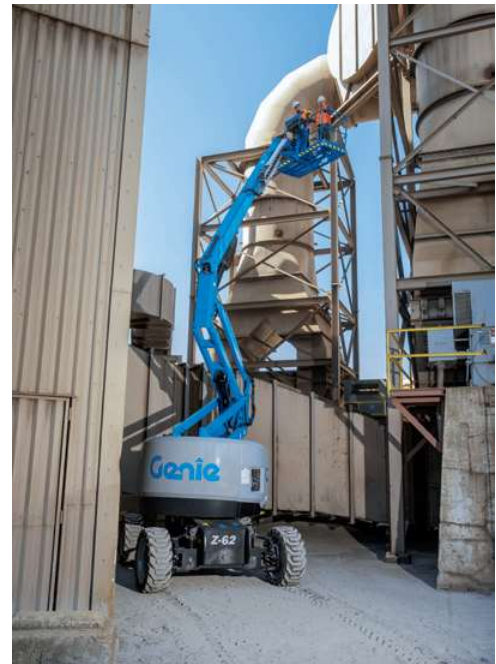
Zero Tailswing



Rugged Terrainability



Genie FastMast



### Genie Genuine Accessories<sup>(1)</sup>

- Lift Tools Productivity Tools
- Tech Pro Link Handheld Device

(1) More accessories available from Genie Genuine Parts.

Product specifications are subject to change without notice or obligation. Photographs and/or drawings herein are for illustrative purposes only. Refer to the appropriate Operator's Manual for instructions on proper equipment use. Failure to follow instructions in the Operator's Manual may result in serious injury or death. The only warranty applicable to our equipment is the standard written warranty applicable to the particular product and sale and we make no other warranty, express or implied. Products and services listed may be trademarks, service marks or trade names of Terex Corporation and/or their subsidiaries in the USA and many other countries. Terex, Genie, Quality By Design, Xtra Capacity, Lift Power, Lift Guard, Lift Tools, Lift Connect and Tech Pro Link are registered trademarks of Terex Corporation or its subsidiaries.

06/22

